

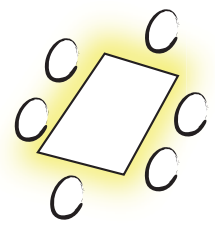
Round Rock GAMEPLAN

● TARGET

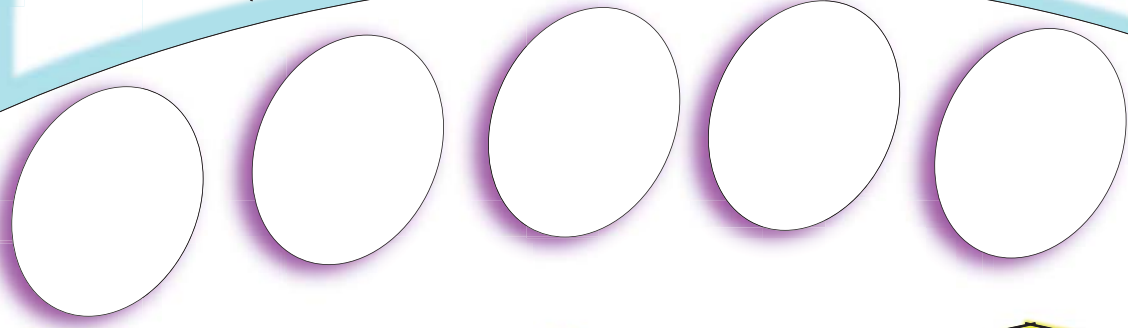
● TEAM/ RESOURCES

● STAGES/TASKS

- | | | |
|--|--|--|
| <ul style="list-style-type: none"> Students have better understanding of "quality of life" requirements → how to attain goals → expressing dreams | <ul style="list-style-type: none"> Make sure EVERY CHILD is coming to kinder on a level playing field Re-evaluate at different grade levels because of mobility of community "transient" | <ul style="list-style-type: none"> parental involvement Be where the parents are More approachable Joint efforts |
|--|--|--|



● SUCCESS FACTORS



● CHALLENGES

Transiency - Quick growth; Lack of transportation within community

